



BARRICK - KIBALI GOLD MINE
PAMOA PIT FTSF - TAILING PUMPSTATION & TRANSFORMERS
CIVIL WORKS PACKAGE

LMJ CONSULTING

Bills of Quantities

19 March 2026

ITEM NO.	SANS REF	DESCRIPTION	UNIT	QUANTITY	RATE	AMOUNT
		SECTION 01: PRELIMINARIES AND GENERAL	H1			
	SANS 1200A	BILL NO. 01 - FIXED CHARGE ITEMS	H1			
	8.3.1	CONTRACTUAL REQUIREMENTS	H2			
1	8.3.1	Providing sureties	SUM	1	-	-
2	8.3.1	Insurance of the Works and Plant	SUM	1	-	-
3	8.3.1	Third party or public liability insurance	SUM	1	-	-
4	8.3.1	Unemployment insurance (to comply with Workmen's Compensation Act)	SUM	1	-	-
5	8.3.1	Other initial financing obligations	SUM	1	-	-
	8.3.2	ESTABLISHMENT OF FACILITIES ON THE SITE	H2			
	8.3.2.1	Facilities for Engineer:	H3			
6	a)	Furnished offices	SUM	1	-	-
7	b)	Telephone	SUM	1	-	-
8	c)	Nameboards	SUM	1	-	-
	8.3.2.2	Facilities for Contractor:	H3			
9	a)	Offices and storage sheds	SUM	1	-	-
10	b)	Workshops	SUM	1	-	-
11	c)	Laboratories	SUM	1	-	-
12	d)	Living accommodation	SUM	1	-	-
13	e)	Ablution and latrine facilities	SUM	1	-	-
14	f)	Tools and equipment	SUM	1	-	-
15	g)	Water supplies	SUM	1	-	-
16	h)	Dealing with water	SUM	1	-	-
17	i)	Access	SUM	1	-	-
18	j)	Plant	SUM	1	-	-
19	k)	Electric power	SUM	1	-	-
20	l)	Communications	SUM	1	-	-
21	8.3.3	Other fixed-charge obligations	SUM	1	-	-
22	8.3.4	Removal of Site Establishment and Camp on Completion	SUM	1	-	-
	SANS 1200A	BILL NO. 02 - VALUE RELATED ITEMS	H1			
	8.3.1	CONTRACTUAL REQUIREMENTS	H2			
23	8.3.1	Providing sureties	SUM	1	-	-
24	8.3.1	Insurance of the Works and Plant	SUM	1	-	-
25	8.3.1	Third party or public liability insurance	SUM	1	-	-
26	8.3.1	Unemployment insurance (to comply with Workmen's Compensation Act)	SUM	1	-	-
27	8.3.1	Other initial financing obligations	SUM	1	-	-
	8.3.2	ESTABLISHMENT OF FACILITIES ON THE SITE	H2			
	8.3.2.1	Facilities for Engineer:	H3			
28	a)	Furnished offices	SUM	1	-	-
29	b)	Telephone	SUM	1	-	-
30	c)	Nameboards	SUM	1	-	-
	8.3.2.2	Facilities for Contractor:	H3			
31	a)	Offices and storage sheds	SUM	1	-	-
32	b)	Workshops	SUM	1	-	-
33	c)	Laboratories	SUM	1	-	-
34	d)	Living accommodation	SUM	1	-	-
35	e)	Ablution and latrine facilities	SUM	1	-	-
36	f)	Tools and equipment	SUM	1	-	-
37	g)	Water supplies	SUM	1	-	-
38	h)	Dealing with water	SUM	1	-	-
39	i)	Access	SUM	1	-	-
40	j)	Plant	SUM	1	-	-
41	k)	Electric power	SUM	1	-	-
42	l)	Communications	SUM	1	-	-
43	8.3.3	Other fixed-charge obligations	SUM	1	-	-
44	8.3.4	Removal of Site Establishment and Camp on Completion	SUM	1	-	-
	SANS 1200A	BILL NO. 03 - TIME RELATED ITEMS	H1			
	8.4.1	CONTRACTUAL REQUIREMENTS	H2			
45	8.4.1	Providing sureties	SUM	1	-	-
46	8.4.1	Insurance of the Works and Plant	SUM	1	-	-
47	8.4.1	Third party or public liability insurance	SUM	1	-	-
48	8.4.1	Unemployment insurance (to comply with Workmen's Compensation Act)	SUM	1	-	-
	8.4.2	OPERATION AND MAINTENANCE OF FACILITIES ON SITE	H2			
	8.4.2.1	Facilities for Engineer:	H3			
49	a)	Furnished offices	SUM	1	-	-
50	b)	Telephone	SUM	1	-	-
51	c)	Nameboards	SUM	1	-	-
52	d)	Survey assistants and materials	SUM	1	-	-
	8.4.2.2	Facilities for Contractor:	H3			
53	a)	Offices and storage sheds	SUM	1	-	-
54	b)	Workshops	SUM	1	-	-
55	c)	Laboratories	SUM	1	-	-
56	d)	Living accommodation	SUM	1	-	-
57	e)	Ablution and latrine facilities	SUM	1	-	-
58	f)	Tools and equipment	SUM	1	-	-
59	g)	Water supplies	SUM	1	-	-
60	h)	Dealing with water	SUM	1	-	-
61	i)	Access	SUM	1	-	-
62	j)	Plant	SUM	1	-	-
63	k)	Electric power	SUM	1	-	-
64	l)	Communications	SUM	1	-	-
65	8.4.3	Supervision for duration of construction	SUM	1	-	-
66	8.4.4	Company and Head Office Overhead Costs for the duration of the Contract	SUM	1	-	-
67	8.4.5	Other Time-related obligations	SUM	1	-	-
		SECTION 02: MEASURED WORKS	H1			
	SANS 1200D	BILL NO. 01 - EARTHWORKS	H1			
		NOTE: Tenderers are advised to study the Model Preambles for Trades before pricing this Bill	tx			
		NOTE: Unless otherwise stated herein, all items in this Bill shall be deemed to be fixed prices for the duration of this project	tx			
	8.3.1	SITE PREPARATION	H2			

	8.3.1.1	Clear and strip site	H3				
68	8.3.1.1	Digging up and removing rubbish, debris, vegetation, hedges, shrubs and trees not exceeding 200mm girth, bush, etc	m2	1030			
	8.3.1.2		H3				
69	8.3.1.2	Remove topsoil to nominal depth of 150mm, stockpile or maintain	m3	155			
	8.3.2	BULK EXCAVATIONS	H2				
	8.3.2(a)	Excavate in all material and use for embankment or backfill (backfill to comply with Engineer's specifications) or dispose, as specified by the Engineer	H3				
70	8.3.2(a)	Depth up to 1,0m	m3	1,332			
71	8.3.2(a)	Depth over 1,0m and up to 2,0m	m3	0			
	8.3.2(b)	Extra-over bulk excavation in all material for	H3				
72	8.3.3(b)	Hard rock excavations	m3	37			
	8.3.3	RESTRICTED EXCAVATION	H2				
	8.3.3(a)	Excavation for restricted foundations, footings and pipe trenches in all materials and use for backfill (backfill to comply with Engineer's specifications) or embankments or dispose, as specified by Engineer	H3				
	8.3.3(a)	Excavations for bases	H4				
73	8.3.3(a)	Depth up to 1,0m	m3	9			
	8.3.3(a)	Excavations for footings	H4				
74	8.3.3(a)	Depth up to 1,0m	m3	15			
	8.3.3(a)	Excavations for apron slabs	H4				
75	8.3.3(a)	Depth up to 1,0m	m3	5			
	8.3.3(a)	Excavations for sumps	H4				
76	8.3.3(a)	Depth up to 1,0m	m3	8			
	8.3.3(a)	Excavations for retaining walls	H4				
77	8.3.3(a)	Depth up to 1,0m	m3	141			
78	8.3.3(a)	Depth over 1,0m and up to 2,0m	m3	123			
79	8.3.3(a)	Depth over 2,0m and up to 3,0m	m3	123			
80	8.3.3(a)	Depth over 3,0m and up to 4,0m	m3	106			
81	8.3.3(a)	Depth over 4,0m and up to 5,0m	m3	211			
82	8.3.3(a)	Depth over 5,0m and up to 6,0m	m3	211			
83	8.3.3(a)	Depth over 6,0m and up to 7,0m	m3	176			
	8.3.4	IMPORTATION OF MATERIALS	H2				
	8.3.4(a)	Extra-over for importation of materials from commercial sources or from borrow pits	H3				
	8.3.4(a)	Selected material taken from commercial sources	H4				
84	8.3.4(a)	25mm crushed stone	m3	24			
85	8.3.4(a)	GS filling material compacted in layers to 98% Mod. AASHTO density at O.M.C.	m3	986			
86	8.3.4(a)	Graded dump rock filling material compacted in layers to 95% Mod. AASHTO density at + 2% OMC	m3	838			
	SABS 1200G	BILL NO. 02 – CONCRETE (STRUCTURAL)	H1				
		NOTE: Tenderers are advised to study the Model Preambles for Trades before pricing this Bill	tx				
		NOTE: Unless otherwise stated herein, all items in this Bill shall be deemed to be fixed prices for the duration of this project	tx				
		SUPPLEMENTARY PREAMBLES	H2				
		Cost of tests	H3				
		The costs of making, storing and testing of concrete test cubes as required under clause 7 "Tests" of SABS 1200 G shall include the cost of providing cube moulds necessary for the purpose, for testing costs and for submitting reports on the tests to the architect. The testing shall be undertaken by an independent firm or institution nominated by the contractor to the approval of the architect. (Test cubes are not measured separately and costs shall be included in the concrete rates)	tx				
		Formwork	H3				
		Description of formwork shall be deemed to include use and waste only (except where described as "left in" or "permanent"), for fitting together in the required forms, wedging, plumbing and fixing to true angles and surfaces as necessary to ensure easy release during stripping and for reconditioning as necessary before re-use	tx				
		The vertical strutting shall be carried down to such construction as is sufficiently strong to afford the required support without damage and shall remain in position until the newly constructed work is able to support itself.	tx				
		Formworks to soffits of solid etc shall be deemed to be slabs not exceeding 250mm thick unless otherwise described	tx				
	8.2	SCHEDULED FORMWORK ITEMS	H2				
	8.2.2	Smooth vertical formwork to sides:	H3				
87	8.2.2	Bund walls	m2	111			
88	8.2.2	Sumps	m2	14			
89	8.2.2	Transformer bases	m2	8			
90	8.2.2	MCC bases	m2	58			
91	8.2.2	MCC columns	m2	61			
92	8.2.2	Pump bases	m2	105			
93	8.2.2	Retaining walls	m2	493			
	8.2.2	Smooth circular formwork to sides:	H3				
94	8.2.2	Tank bases	m2	7			
	8.3	SCHEDULED REINFORCEMENT ITEMS	H2				
	8.3.1	Steel bars	H3				
95	8.3.1	High tensile steel reinforcement bars of various diameters	t	40			
	8.3.2	High tensile welded mesh	H3				
96	8.3.2	Type reference 305	m2	453			
	8.4	SCHEDULED CONCRETE ITEMS	H2				
	8.4.2	Blinding layer in concrete grade 25MPa/19mm	H3				
97	8.4.2	50 mm thick	m3	37			
	8.4.3	Strength concrete 30MPa/26.5mm	H3				
98	8.4.3	Bund walls	m3	14			
99	8.4.3	Sumps	m3	1			
100	8.4.3	Transformer bases	m3	3			
101	8.4.3	MCC bases	m3	9			
102	8.4.3	MCC columns	m3	8			
103	8.4.3	Strip footings cast against excavated surfaces	m3	7			
104	8.4.3	Surface beds including thickenings, to falls	m3	109			
105	8.4.3	Apron slabs, to falls	m3	5			
106	8.4.3	Pump bases	m3	72			
107	8.4.3	Tank bases	m3	6			
108	8.4.3	Retaining walls	m3	246			
	8.4.4	Unformed Surface Finishes	H3				
109	8.4.4(c)	Wood floated finish	m2	603			
110	8.4.4(c)	Power floated finish	m2	0			
	8.5	JOINTS	H2				
	8.5	Isolation joints	H3				
111	8.5	10 x 10mm "Durakol 25G" by ABE or similar approved Polysulphide sealant with 10mm Jointex by Sondor joint filler or similar approved, all to Manufacturer's specifications	m	254			
	8.5	Saw cut joints	H3				
112	8.5	10 x 10mm "Durakol 25G" by ABE or similar approved Polysulphide sealant with Polyethylene back-up, all to Manufacturer's specifications	m	217			
	8.5	Key joints	H3				
113	8.5	50mm diameter half round mid span of slab, all in accordance with the Engineer's design and specifications	m	51			
	8.7	GROUTING	H2				
	8.7	Scabbling, cleaning, and preparing concrete surfaces, providing "Conbextra GP" or similar approved grout, placing and ramming it solidly into all voids and pockets, and mitring the outside edges to a true wood-floated surface including providing formwork where required	H3				

114	8.7(a)	Under bases	m3	2	-	-
115	8.7(b)	HD bolts, etc	No	112	-	-
	8.8	H.D. BOLTS AND MISCELLANEOUS METALWORK	H2			
		H.D. Bolts	H3			
116	8.8	24mm Diameter anchor bolt with threaded end for and including nuts and washers, other end with plate washer welded on, cast in top of concrete including providing grouting pocket, etc.	No	12	-	-
117	8.8	30mm Diameter anchor bolt with threaded end for and including nuts and washers, other end with plate washer welded on, cast in top of concrete including providing grouting pocket, etc.	No	100	-	-
		Chemical anchors	H3			
118	8.8	M16 Stainless steel chemical anchors 200 mm long ('HVA-UW' or similar approved)	No	12	-	-
119	8.8	M20 Stainless steel chemical anchors 200 mm long ('HVA-UW' or similar approved)	No	150	-	-
120	8.8	Handrail stanchions to be cast into concrete at 1200mm C/C as per the Engineer's design and specifications	No	93	-	-
		BILL NO. 04 - MASONRY	H1			
		NOTE: Tenderers are advised to study the Model Preambles for Trades before pricing this Bill	tx			
		NOTE: Unless otherwise stated herein, all items in this Bill shall be deemed to be fixed prices for the duration of this project	tx			
		BRICKWORK	H2			
		Sizes in descriptions	H3			
		Where sizes in descriptions are given in brick units, "one brick" shall represent the length and "half brick" the width of a brick	tx			
		Hollow walls etc	H3			
		Descriptions of hollow walls shall be deemed to include leaving every fifth perpend of the bottom course of the external skin open as a weep hole.	tx			
		Walls in two skins described as "bagged and sealed" shall be deemed to include having the outer face of the inner skin bagged with 1:6 cement and sand mixture and sealed with two coats "Brixeal" bitumen emulsion waterproofing coating.	tx			
		User rates	H3			
		The above preamble generally applies for works in hot and humid coastal areas	tx			
		Face bricks	H3			
		Bricks shall be ordered timeously to obtain uniformity in size and colour	tx			
		Pointing	H3			
		Descriptions of recessed pointing to fair face brickwork and face brickwork shall be deemed to include square recessed, hollow recessed, weathered pointing, etc	tx			
		BRICKWORK	H2			
121		Brickwork of NFB bricks (14 MPa nominal compressive strength) in class II mortar	m2	1	-	-
122		150mm thick brick walls	m2	209	-	-
		BRICKWORK SUNDRIES	H2			
		2.8mm Galvanised brickwork reinforcement	H3			
123		75mm Wide reinforcement built in horizontally	m	3	-	-
124		150mm Wide reinforcement built in horizontally	m	616	-	-
		ANCILLARIES	H2			
		Pipes cast into brickwork	H3			
125		80NB pipe, galvanised, 350mm long complete with 80NB ball valve cast into wall at 5-degree decline from the horizontal plane, all in accordance with the Engineer's design and specifications	m	2	-	-
		SANS 1200H	H1			
		BILL NO. 04 - STRUCTURAL STEELWORK	H1			
		NOTE: Tenderers are advised to study the Model Preambles for Trades before pricing this Bill	tx			
		NOTE: Unless otherwise stated herein, all items in this Bill shall be deemed to be fixed prices for the duration of this project	tx			
	8.3	GENERAL STEELWORK	H2			
	8.3.1	Supply, loading, delivery, offloading, stacking, assembly, erection and fabrication of Grade S355JR including all end and base plates, stiffeners, gussets and the alike, of welded and bolted sections to Engineer's specifications (all site bolting, welding, etc. to be included in the erection rates), including erection equipment, temporary supports, and safety measures all in accordance with the Engineers' specifications and requirements	H3			
	8.3.1	Columns, beams, vertical and horizontal bracing including channels, angles	H4			
126	8.3.1.1	Detailing	t	38	-	-
127	8.3.1.2	Supply	t	38	-	-
128	8.3.1.2	Fabrication	t	38	-	-
129	8.3.2	Delivery	t	38	-	-
130	8.3.3	Erection	t	38	-	-
131	8.3.13	Galvanising	t	38	-	-
	8.3.4	ERECTION BOLTS	H2			
	8.3.4	Various diameter high tensile steel bolts grade 8.8 hot dipped galvanised	H3			
132	8.3.4	Supply	t	2	-	-
133	8.3.4	Delivery	t	2	-	-
134	8.3.4	Erection	t	2	-	-
	8.3.7	HANDRAILS	H2			
	8.3.7	Supply, offloading and installation of hot-dipped galvanised "We-Cro-Lok GMS" solid forged hand and knee rail system (horizontal and sloping) or similar approved, including 25mm diameter solid bar hand and knee rail with 32mm solid bar stanchion, 1,075m high, 90 degree side mounted and/or flat base mounted complete with base plate, including 2 x M16 galvanised mild steel bolts and neoprene gaskets, bends, closures fixed to steelwork, concrete or brickwork, installed complete including touching-up of galvanising after installation, as per Engineers' specifications	H3			
135	8.3.7(b)	Supply	m	486	-	-
136	8.3.7(b)	Delivery	m	486	-	-
137	8.3.7(b)	Install	m	486	-	-
	8.3.9	FLOORING, COMPLETE AND INSTALLED WITH FRAME	H2			
	8.3.9	Hot-dip galvanised, open rectagrid, non-slip, floor grating RS40 or similar approved, 40 mm openings with 30 x 4,5 mm thick bearer bars, complete with banded edges or 130 x 6 mm thick kick flats in banded panels cut to size and fastened and fixed to steelwork with minimum 8mm diameter securing bolts and clamps, c/w Nyloc nuts and washers (4 per panel minimum) in accordance with Engineers' specification	H3			
138	8.3.9	Supply	m2	303	-	-
139	8.3.9	Delivery	m2	303	-	-
140	8.3.9	Install	m2	303	-	-
	8.3.9	Hot-dip galvanised, open grid stair treads "ST1 Vitagrid" type or similar approved, with non-slip nosing, fastened with hot-dipped galvanised M12 class 8.8 bolts	H3			
	8.3.9	750 x 290mm stair treads	H4			
141	8.3.9	Supply	No	112	-	-
142	8.3.9	Delivery	No	112	-	-
143	8.3.9	Install	No	112	-	-
		GALVANISED PRESSED STEEL DOOR AND DOOR FRAMES	H2			
		1,2mm Galvanised Pressed steel doors and door frames	H3			
144		Special (transformer) double door overall size 3 400 x 3 000mm high with rebated frame suitable for one brick wall and supplied with two steel hinges per door leaf, installed complete.	No	2	-	-



LMJ Consulting (Pty) Ltd
Registration No.2004/030069/07
14 Oxford Office Park
3 Bauhinia Street
Building 2, Level 1
Highveld Techno Park
Centurion, 0157
Tel: +27 12 003 0476
E-mail: info@lmj.co.za

Document Transmittal No KBL CW 006

To:	Kibali Gold Mine	From:	Berardo Farfan
Att:	Kaiser Mbiko	Email:	bfarfan@lmj.co.za
Email:	Kaiser.Mbiko@kigaligold.com	Cell:	+27 82 928 3640
Date:	24 February 2026		

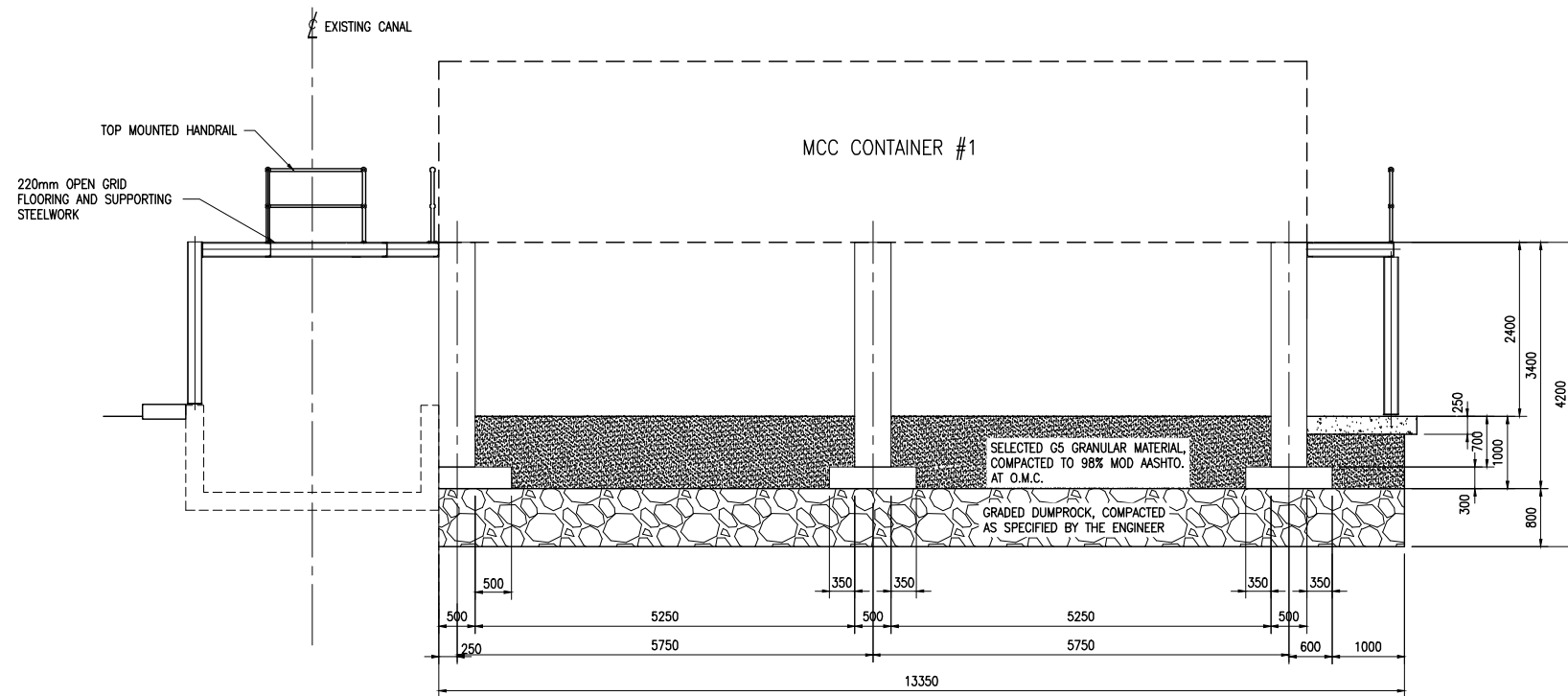
1. Documents Enclosed:

Drawing No	Drawing Title	Revision	Type
	Pamao Pit FTSF. Tailing Pumpstation Civil Works		
KBL TPSC 001	Overall General Arrangement	A	PDF
KBL TPSC 002	General arrangement	A	PDF
KBL TPSC 003	Plan View	A	PDF
KBL TPSC 004	Sections	A	PDF
KBL TPSC 011	Pump Plinths. HD Bolt Details	A	PDF
KBL TPSC 013	Steelworks. Valve Supports	A	PDF
KBL TPSC 021	MCC & Transformer Bay. GA	A	PDF
KBL TPSC 022	MCC & Transformer Bay. Sections & Details	A	PDF

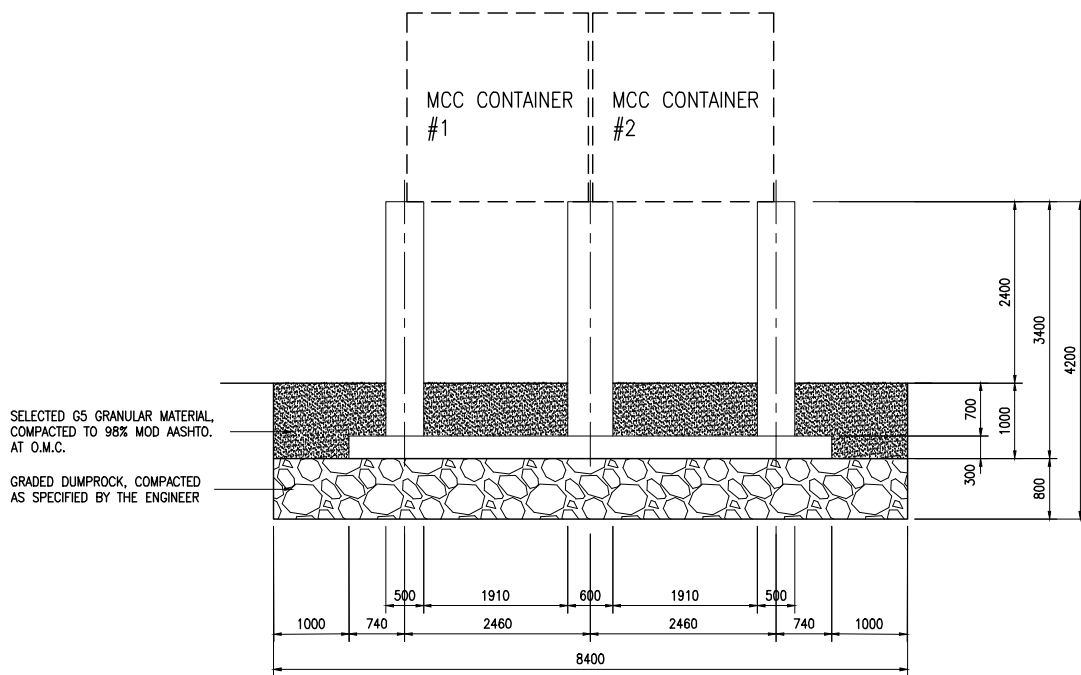
Received by

Date

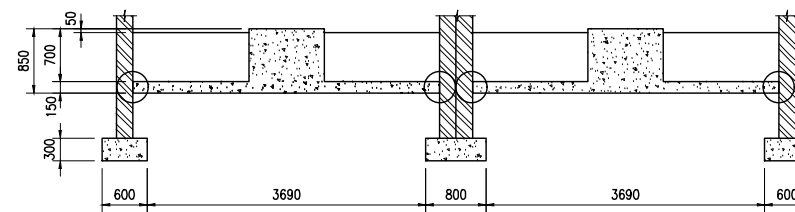
Signature



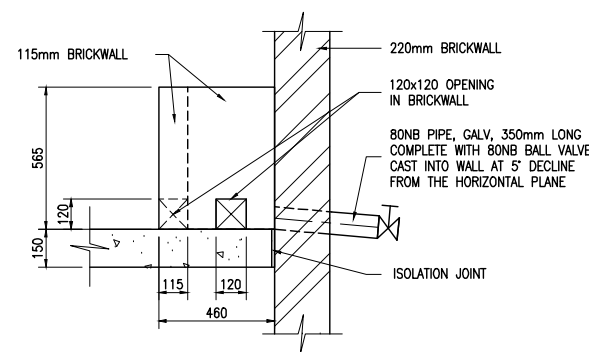
SIDE ELEVATION
SCALE 1:50



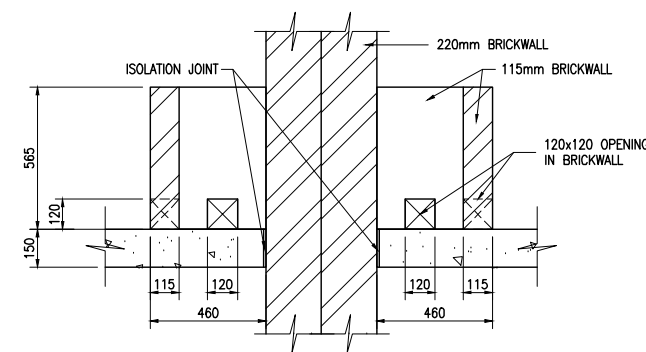
END ELEVATION
SCALE 1:50



TYPICAL SECTION THRU' TRANSFORMER BAYS
SCALE 1:50

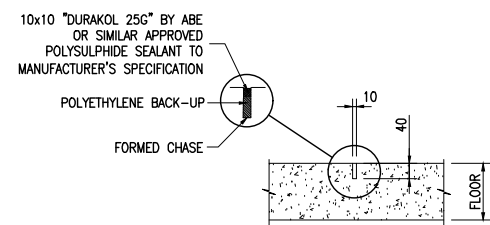


SIDE ELEVATION

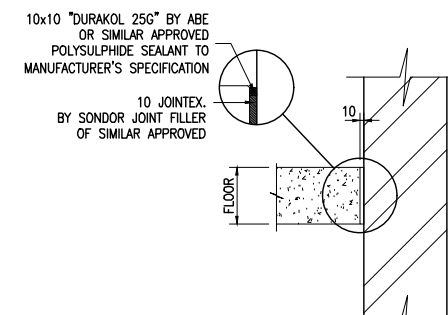


SECTION THRU' DRAINAGE SUMP

DETAIL 1
SCALE 1:15



TYPICAL SAW CUT JOINT
SCALE 1:10



TYPICAL ISOLATION JOINT
SCALE 1:10

ISSUED FOR INFORMATION ONLY

A	ISSUED FOR INFORMATION	Feb. '26	BBF
REV	DESCRIPTION	DATE	CHKD/APPRV

DESIGNED	BBF	Feb.'26
DRAWN	BG	Feb.'26
CHECKED	BBF	Feb.'26
PROJ. ENGINEER		DATE
PROJ. MANAGER		DATE

CONSULTANT:



CLIENT:



PROJECT/DRAWING TITLE

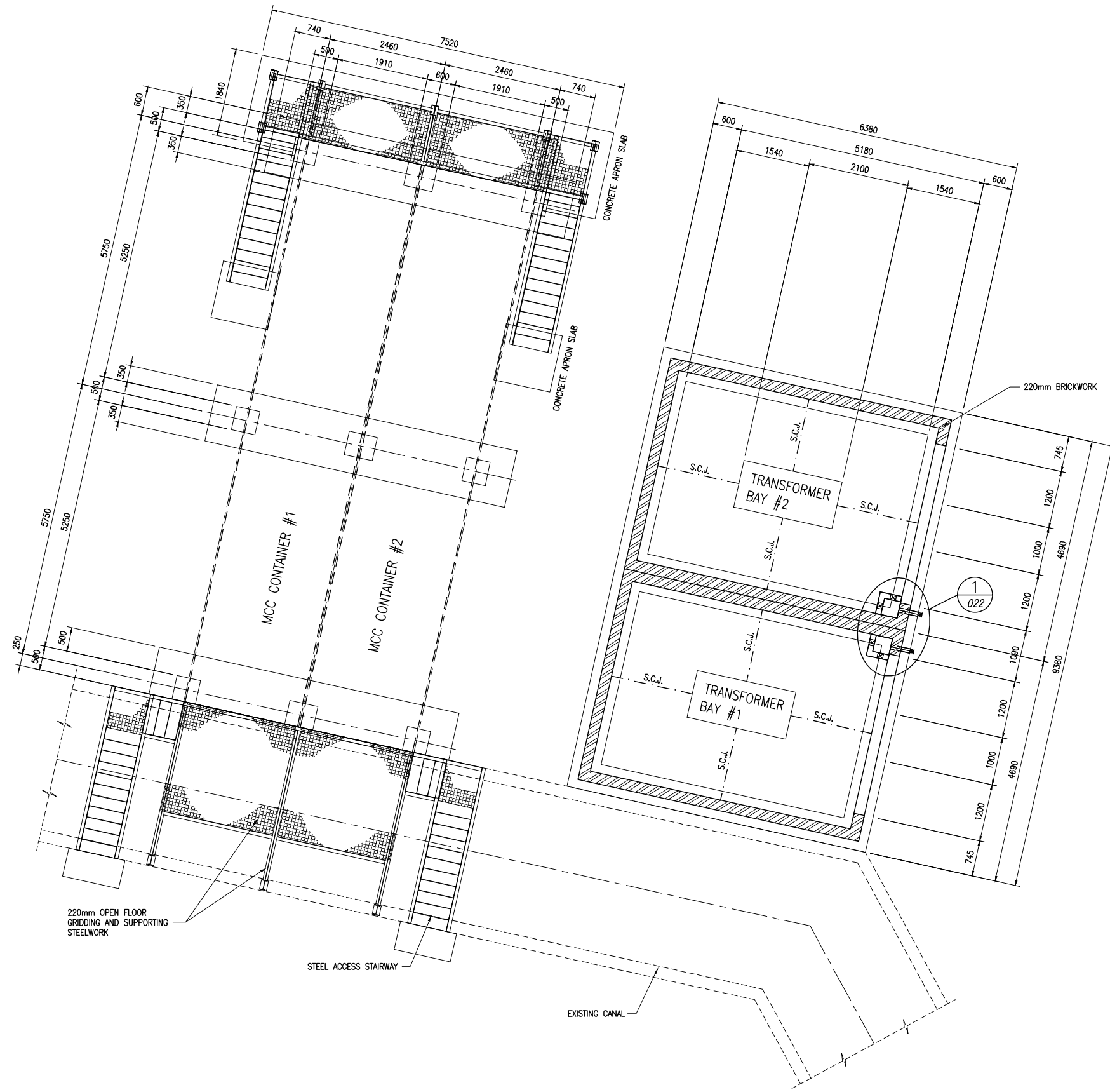
PAMAO PIT FTSF TAILINGS
TAILING PUMPSTATION

CIVIL WORKS
MCC AND TRANSFORMER BAY
SECTIONS AND DETAILS

SCALE 1:50	SHT. No. 1 OF 1
---------------	-----------------

CONSULTANT Dwg No. KBL TPSC 022	PROJECT No.
------------------------------------	-------------

CLIENT DRAWING No. REV



ISSUED FOR INFORMATION ONLY

A	ISSUED FOR INFORMATION	Feb. '26	BBF
REV	DESCRIPTION	DATE	CHKD/APPRV

DESIGNED	BBF	Feb.'26
DRAWN	BG	Feb.'26
CHECKED	BBF	Feb.'26
PROJ. ENGINEER		DATE
PROJ. MANAGER		DATE

CONSULTANT:



CLIENT:



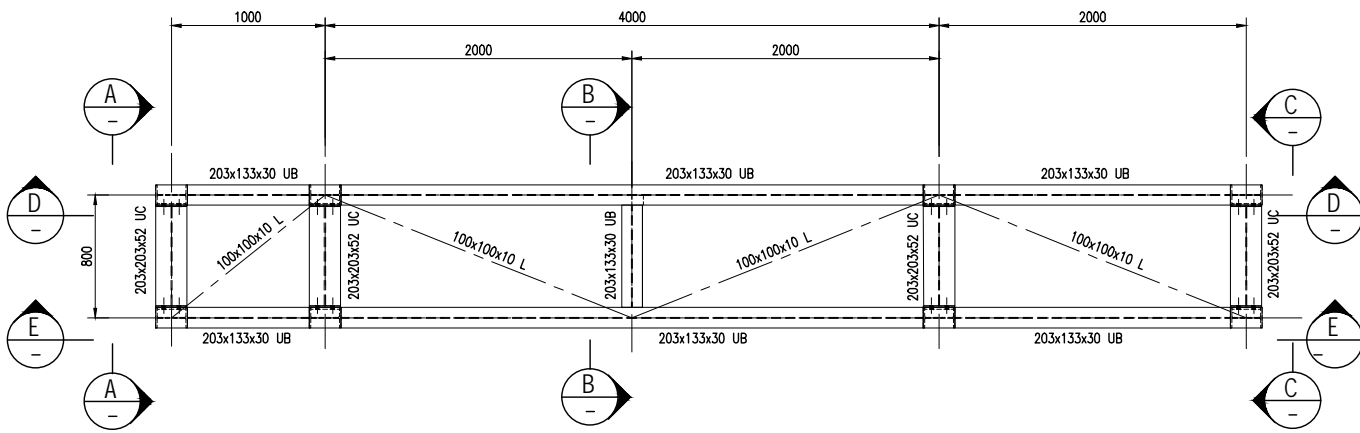
PROJECT/DRAWING TITLE
 PAMAO PIT FTSF TAILINGS
 TAILING PUMPSTATION

 CIVIL WORKS
 MCC AND TRANSFORMER BAY
 GENERAL ARRANGEMENT

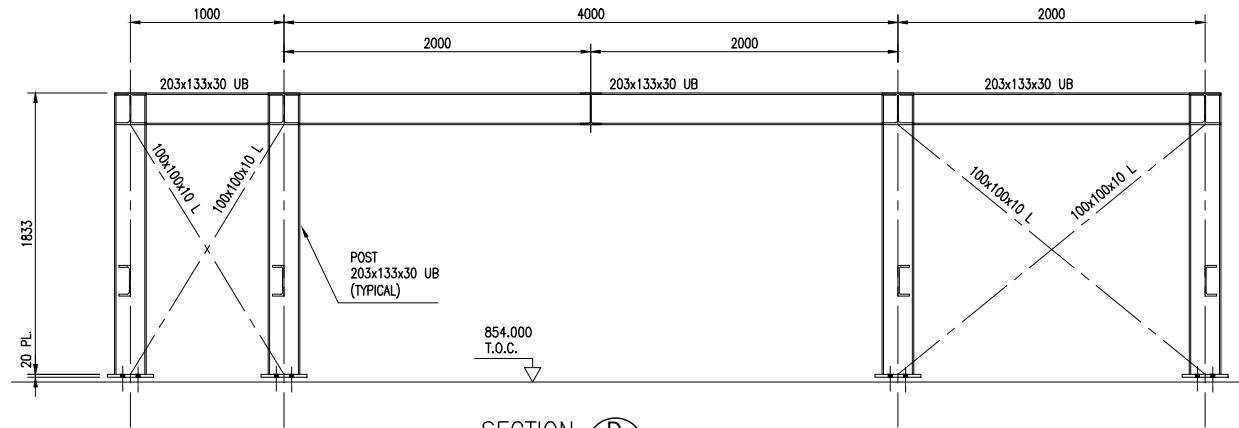
SCALE 1:50	SHT. No. 1 OF 1
---------------	-----------------

CONSULTANT Dwg No. KBL TPSC 021	PROJECT No.
------------------------------------	-------------

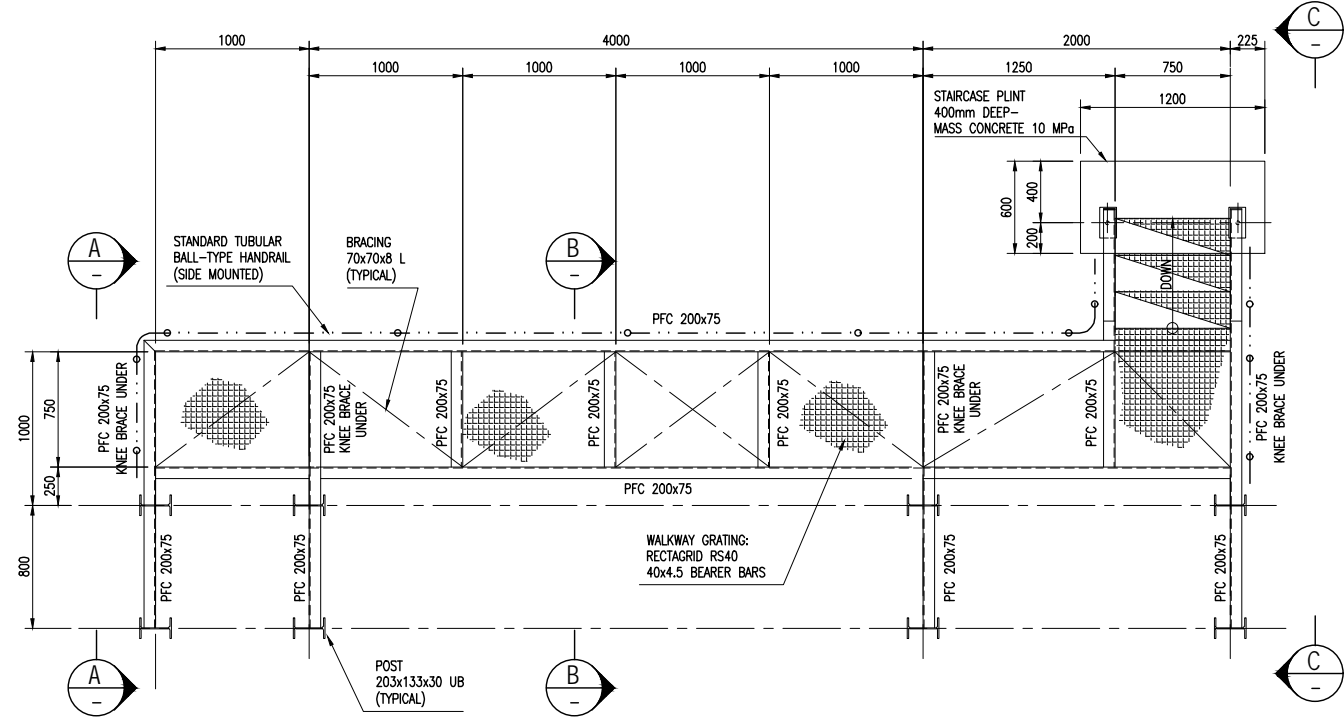
CLIENT DRAWING No.	REV A
--------------------	----------



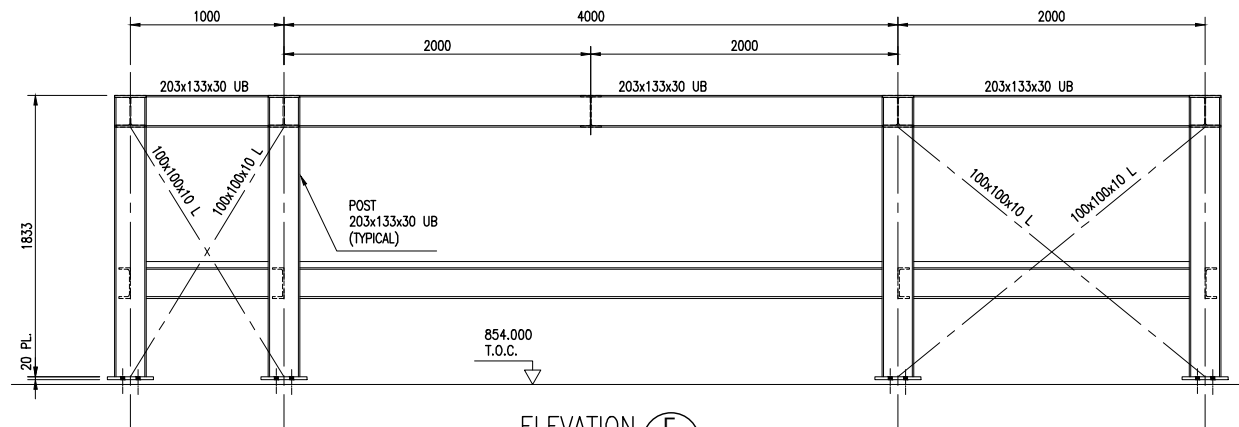
PLAN ON TOP OF VALVE SUPPORT STRUCTURE
SCALE 1:25



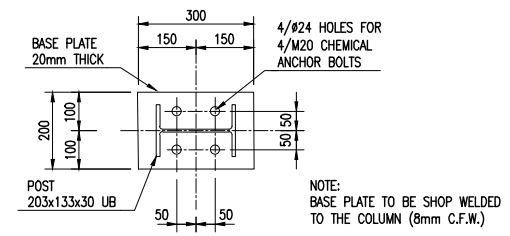
SECTION D
SCALE 1:25



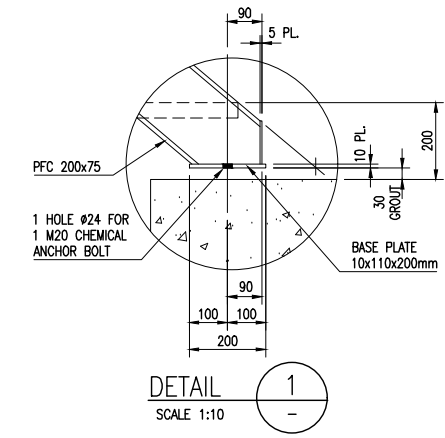
PLAN ON WALKWAY
SCALE 1:25



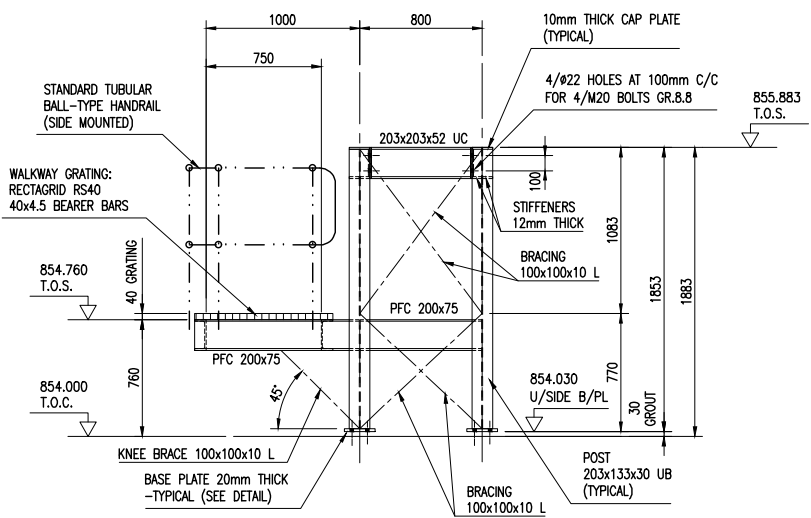
ELEVATION E
SCALE 1:25



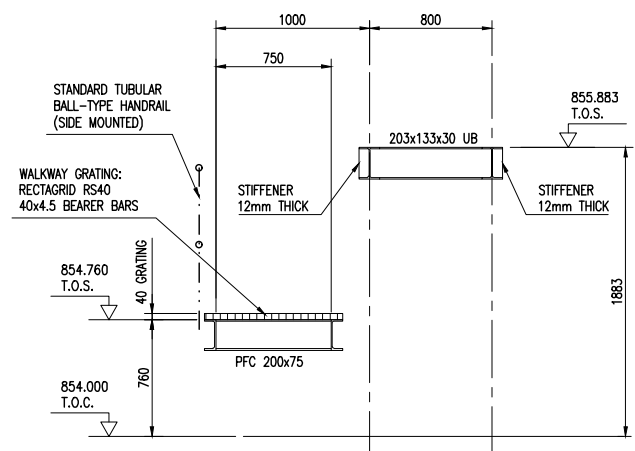
BASE PLATE BP1 DETAIL
(8 N° OFF)
SCALE 1:10



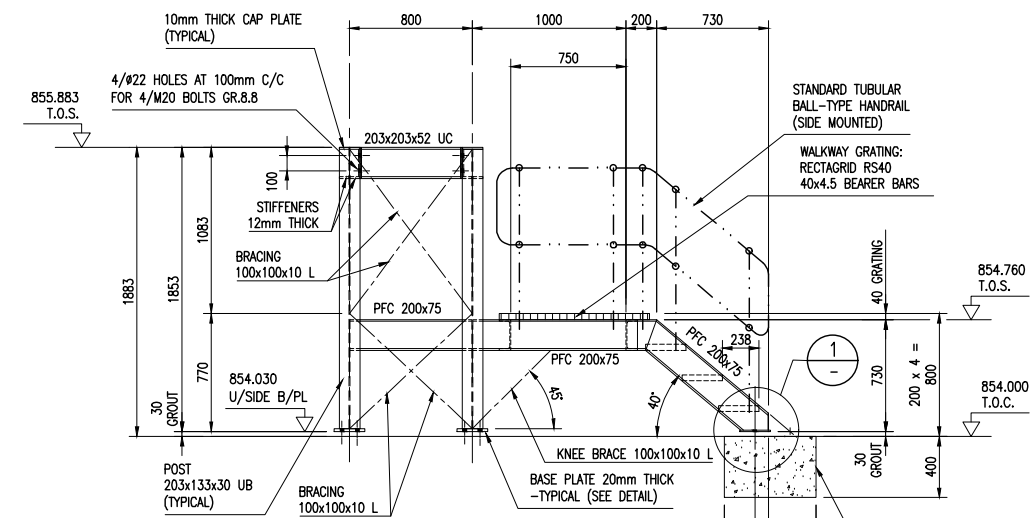
DETAIL 1
SCALE 1:10



VIEW A
SCALE 1:25



SECTION B
SCALE 1:25



VIEW C
SCALE 1:25

ISSUED FOR INFORMATION ONLY

REV	DESCRIPTION	DATE	CHKD/APPRV
A	ISSUED FOR INFORMATION	Feb.'26	BBF
DESIGNED	BBF	Feb.'26	
DRAWN	BG	Feb.'26	
CHECKED	BBF	Feb.'26	
PROJ. ENGINEER		DATE	
PROJ. MANAGER		DATE	

CONSULTANT:



CLIENT:



PROJECT/DRAWING TITLE

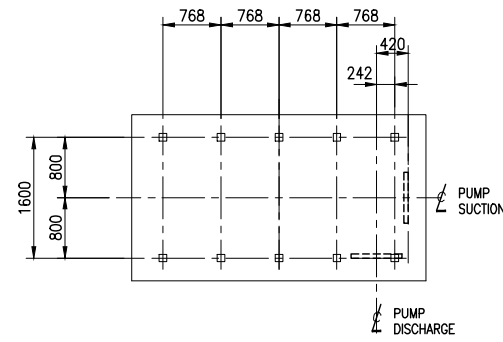
PAMAO PIT FTSF TAILINGS TAILING PUMPSTATION

CIVIL WORKS STEELWORK VALVE SUPPORTS

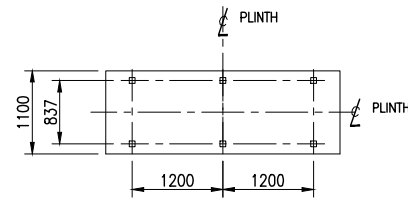
SCALE AS SHOWN SHT. No. 1 OF 1

CONSULTANT Dwg No. KBL TPSC 013 PROJECT No.

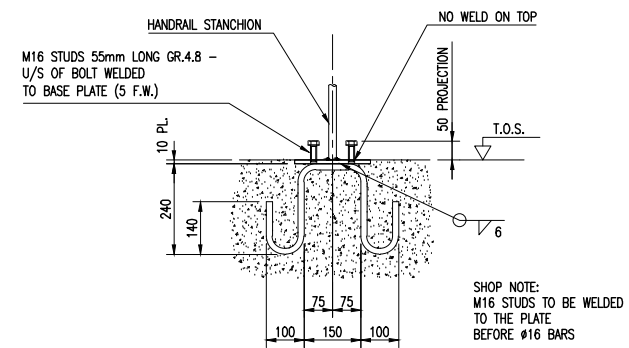
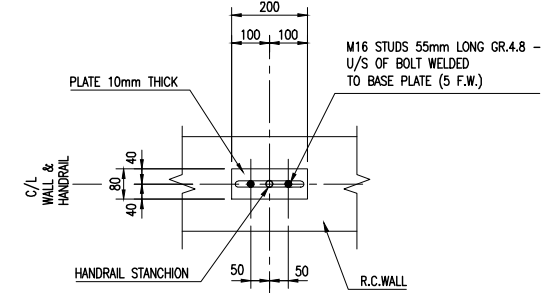
CLIENT DRAWING No. REV



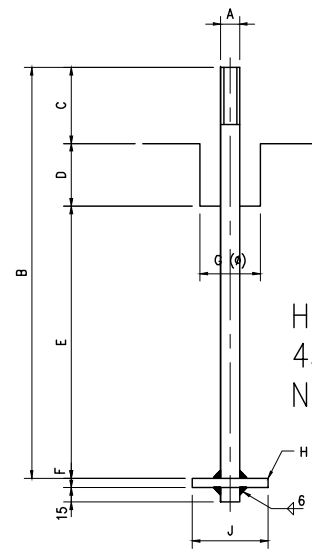
HD-BOLT LAYOUT FOR 12/10 SLURRY PUMPS



HD-BOLT LAYOUT FOR GSW PUMPS



DETAIL OF CAST-IN PLATE FOR HANDRAIL STANCHIONS FIXED TO THE TOP OF BUND WALL
SCALE 1:10



HD BOLTS TO BE M.S. GR 43, SUPPLIED WITH ONE NUT AND WASHER EACH

TYPE	No OFF	A	B	C	D	E	F	G	H	J
M30	100	30	900	120	150	630	20	100		120x120
M24	12	24	750	110	120	520	16	75		80x80

HD-BOLT SCHEDULE

ISSUED FOR INFORMATION ONLY

REV	DESCRIPTION	DATE	CHKD	APPRV
A	ISSUED FOR INFORMATION	Feb.'26	BBF	

DESIGNED	BBF	Feb.'26
DRAWN	BG	Feb.'26
CHECKED	BBF	Feb.'26
PROJ. ENGINEER		DATE
PROJ. MANAGER		DATE

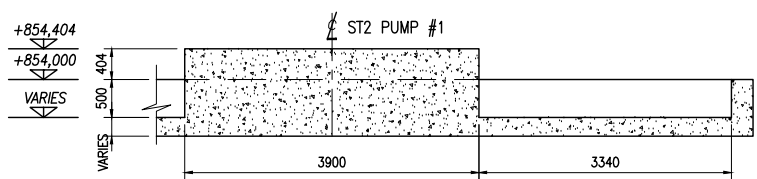


PROJECT/DRAWING TITLE
PAMAO PIT FTSF TAILINGS TAILING PUMPSTATION

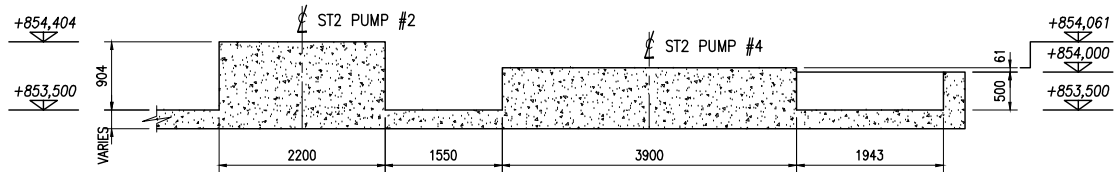
CIVIL WORKS
PUMP PLINTHS
HD BOLT DETAILS

SCALE N.T.S.	SHT. No. 1 OF 1
CONSULTANT Dwg No. KBL TPSC 011	PROJECT No.

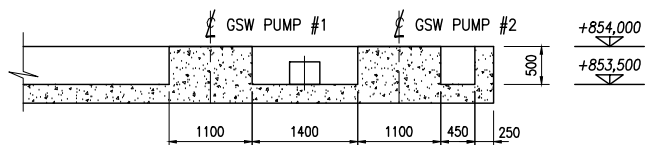
CLIENT DRAWING No.	REV A
--------------------	----------



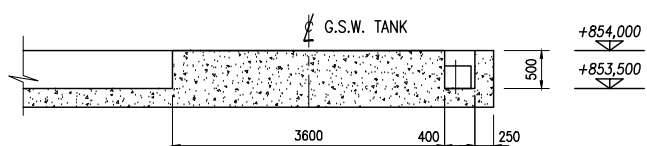
SECTION A
SCALE 1:50



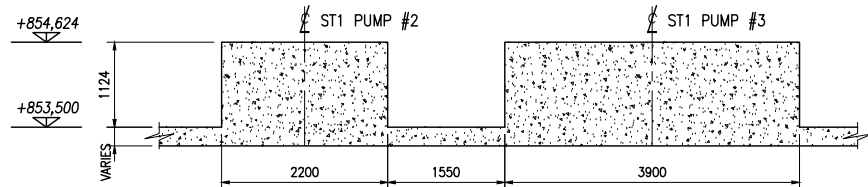
SECTION B
SCALE 1:50



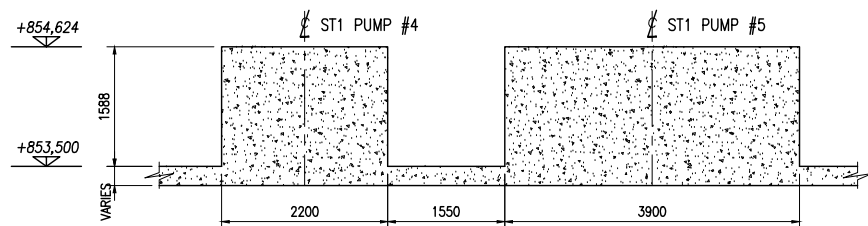
SECTION C
SCALE 1:50



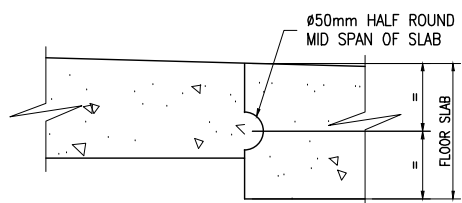
SECTION D
SCALE 1:50



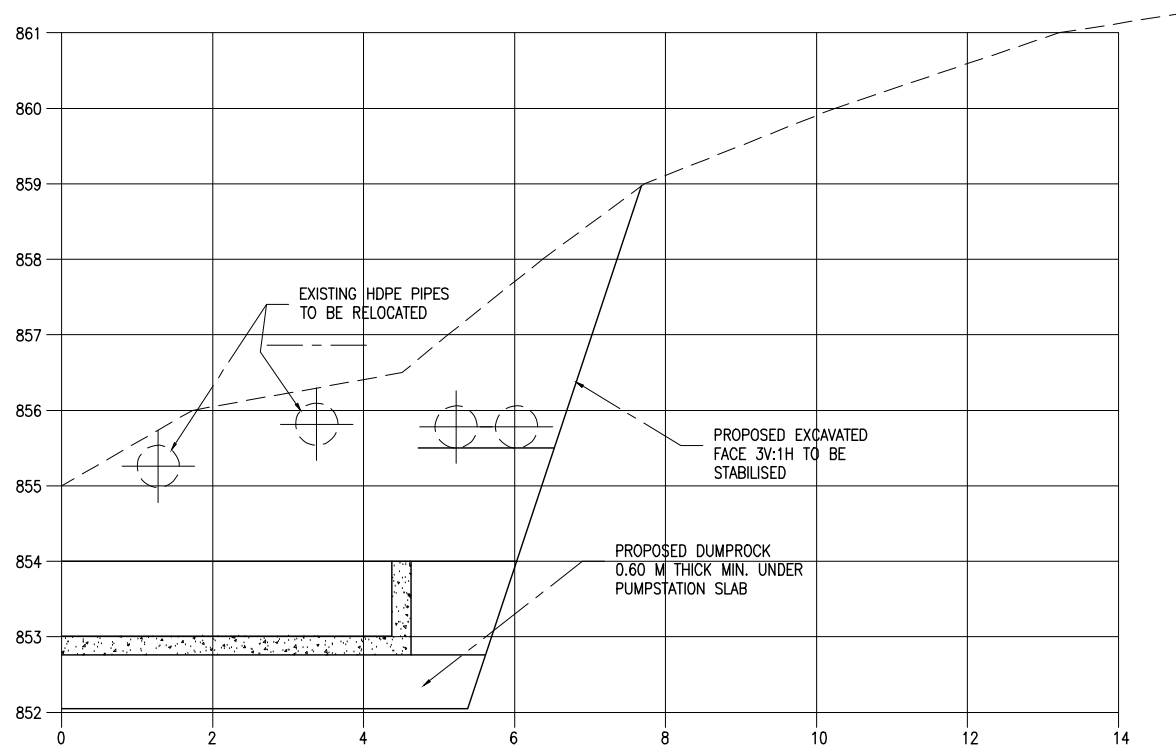
SECTION E
SCALE 1:50



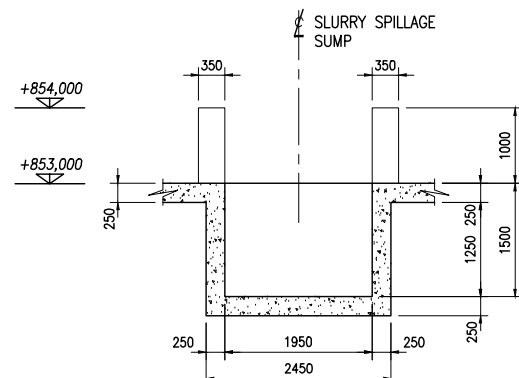
SECTION F
SCALE 1:50



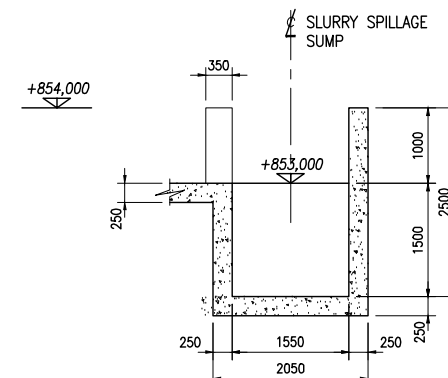
KEY JOINT DETAIL (TYP.)
SCALE 1:10



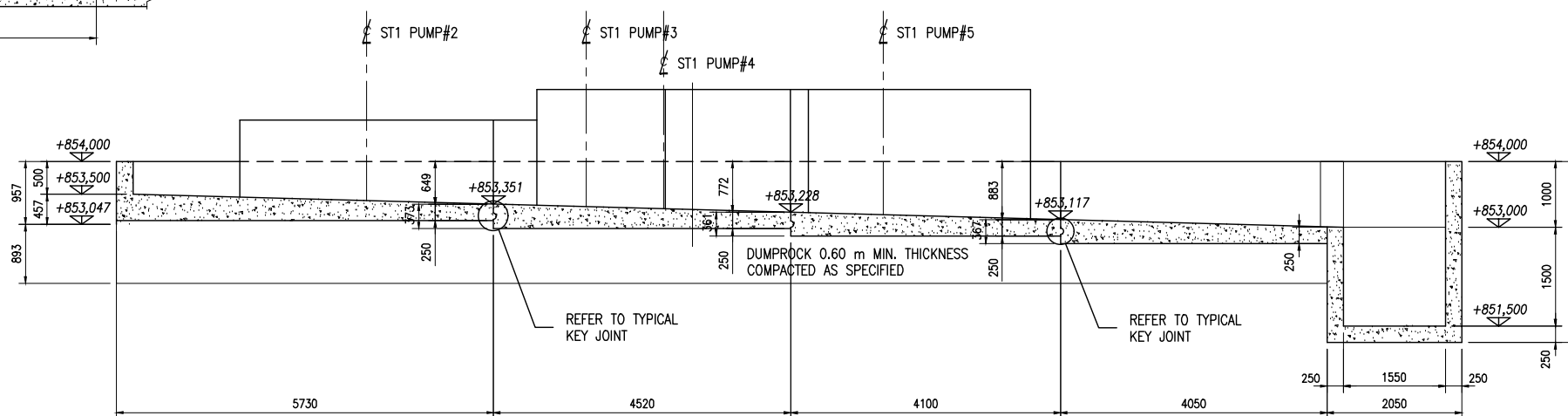
SECTION G
SCALE 1:50



SECTION H
SCALE 1:50



SECTION J
SCALE 1:50



SECTION K
SCALE 1:50

ISSUED FOR INFORMATION ONLY

A	ISSUED FOR INFORMATION	Feb.'26	BBF
REV	DESCRIPTION	DATE	CHKD/APPRV
DESIGNED	BBF	Feb 26	
DRAWN	BG	Feb 26	
CHECKED	BBF	Feb 26	
PROJ. ENGINEER		DATE	
PROJ. MANAGER		DATE	

CONSULTANT:



CLIENT:



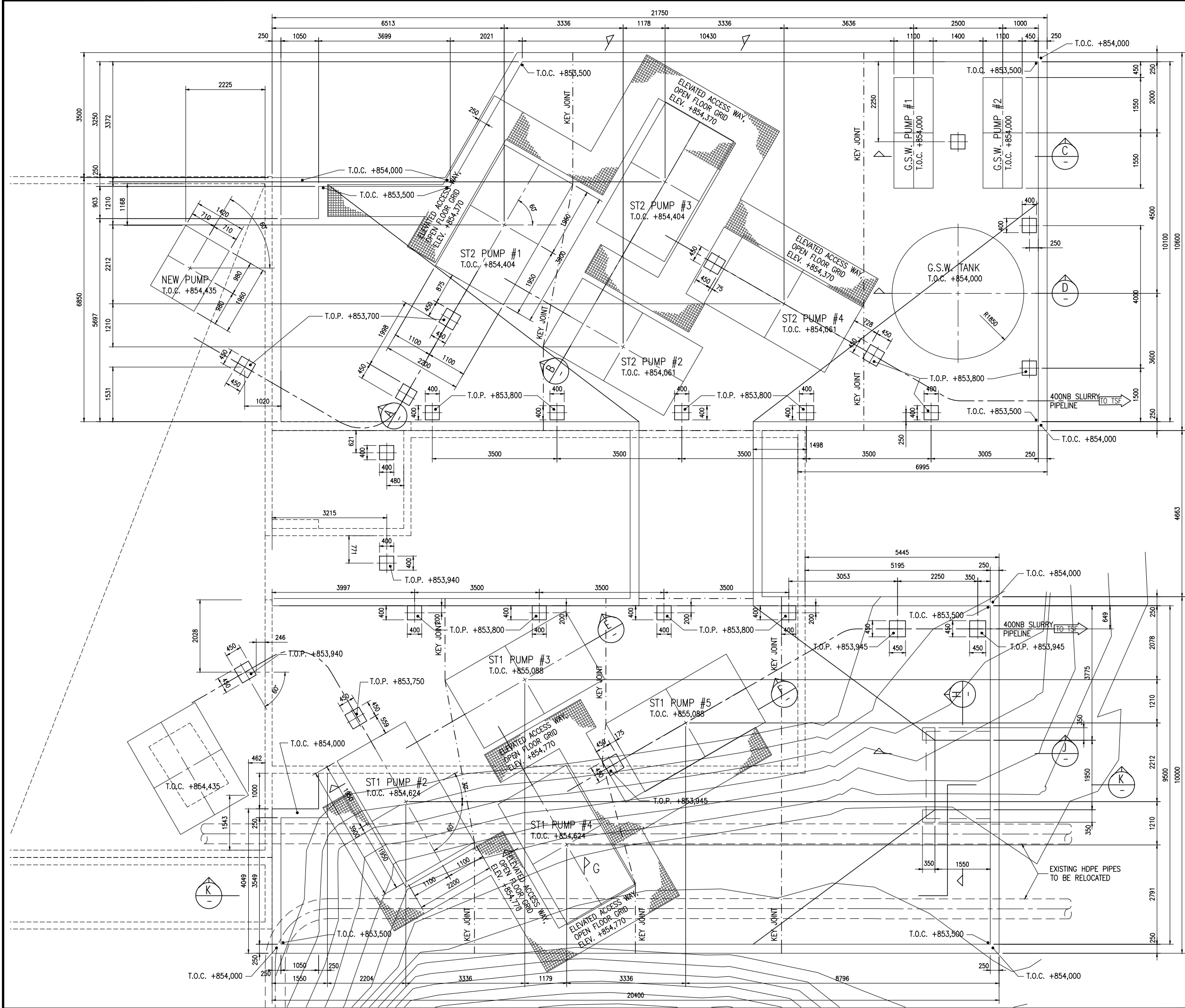
PROJECT/DRAWING TITLE

PAMAO PIT FTSF TAILINGS
TAILING PUMPSTATION

CIVIL WORKS
-
SECTIONS

SCALE 1:50	SHT. No. 1 OF 1
CONSULTANT Dwg No. KBL TPSC 004	PROJECT No.

CLIENT DRAWING No.	REV A
--------------------	----------



ISSUED FOR INFORMATION ONLY

REV	DESCRIPTION	DATE	CHKD	APPRV
A	ISSUED FOR INFORMATION	Feb.'26	BBF	

DESIGNED	DATE
BBF	Feb 26

DRAWN	DATE
BG	Feb 26

CHECKED	DATE
BBF	Feb 26

PROJ. ENGINEER	DATE

PROJ. MANAGER	DATE

CONSULTANT:



CLIENT:



PROJECT/DRAWING TITLE

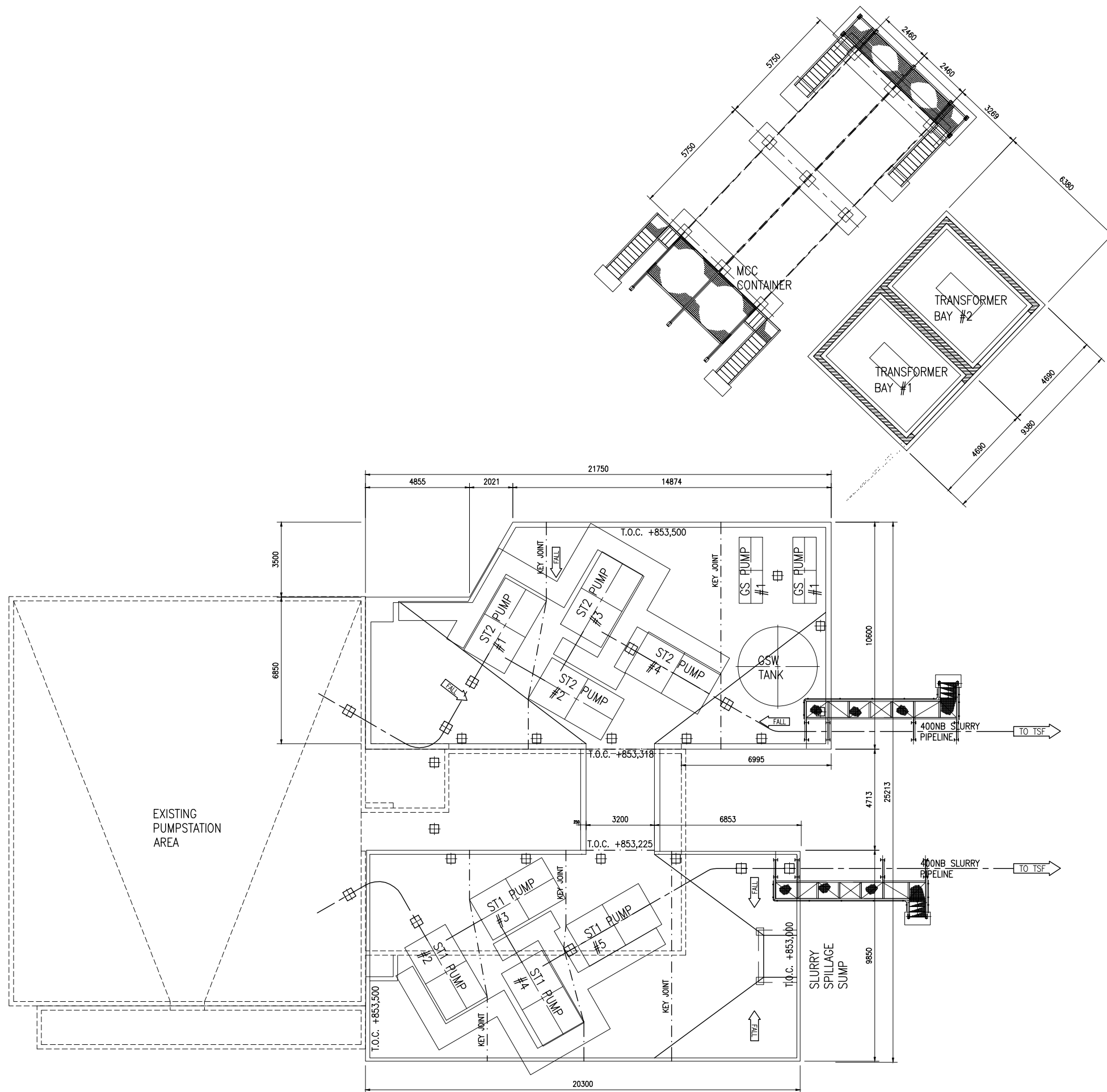
PAMAO PIT FTSF TAILINGS TAILING PUMPSTATION

CIVILWORKS
-
PLAN VIEW

SCALE 1:50 SHT. No. 1 OF 1

CONSULTANT Dwg No. KBL TPSC 003 PROJECT No.

CLIENT DRAWING No. REV



ISSUED FOR INFORMATION ONLY

A	ISSUED FOR INFORMATION	Feb.'26	BBF
REV	DESCRIPTION	DATE	CHKD/APPRV

DESIGNED	BBF	Feb.'26
DRAWN	BG	Feb.'26
CHECKED	BBF	Feb.'26
PROJ. ENGINEER		DATE
PROJ. MANAGER		DATE

CONSULTANT:



CLIENT:



PROJECT/DRAWING TITLE

PAMAO PIT FTSF TAILINGS
TAILING PUMPSTATION

CIVILWORKS
—
GENERAL ARRANGEMENT

SCALE 1:100	SHT. No. 1 OF 1
----------------	-----------------

CONSULTANT Dwg No. KBL TPSC 002	PROJECT No.
------------------------------------	-------------

CLIENT DRAWING No.	REV A
--------------------	----------



ISSUED FOR INFORMATION ONLY

REV	DESCRIPTION	DATE	CHKD	APPRV
A	ISSUED FOR INFORMATION	Oct.'25	BBF	
DESIGNED	BBF	Feb.'26		
DRAWN	BG	Oct.'25		
CHECKED	BBF	Feb.'26		
PROJ. ENGINEER		DATE		
PROJ. MANAGER		DATE		

CONSULTANT:



CLIENT:



PROJECT/DRAWING TITLE
 PAMAO PIT FTSF TAILINGS
 TAILING PUMPSTATION
 CIVILWORKS
 OVERALL GENERAL ARRANGEMENT

SCALE 1:250	SHT. No. 1 OF 1
CONSULTANT Dwg No. KBL TPSC 001	PROJECT No.

CLIENT DRAWING No. REV
