

## **Scope of Work (SOW) - Conceptual Design for Camp Development at Kibali Mine**

### **1. Project Overview**

The objective of this assignment is to develop a conceptual design for a proposed camp development that will accommodate temporary and semi-permanent residents and associated operational facilities. The conceptual design will establish the overall layout, infrastructure strategy, and functional planning required to support the intended camp capacity and operations. The work is part of the overall Kibali Expansion Study which is ongoing at Kibali currently and is intended to be complete by October 2026.

The camp complex comprises 1,216 rooms across several accommodation areas. These include the Doko Camp, which houses both employees and contractors, short-term visitor guest houses, and a junior village camp located outside the main camp for junior employees living with their families. Additional accommodation is located in the nearby town for government officials and the police unit assigned to the Mine.

Catering services are provided to all residents and business partners by Golden Camp Solutions (GCS). The main canteen serves both company and contractor personnel, supplemented by satellite dining facilities for local workers. On-site amenities include a grocery store, mini-supermarket, restaurant, club, gym, ATM, and recreational areas with tennis, basketball, volleyball, and football facilities.

The camp design will serve as a relocation of the existing camp, utilizing similar levels of service to the existing infrastructure. The scope of work should also include a design for an increase in footprint with increasing increments of +30%, +60%, 100% size.

The camp location has been roughly determined, though exact extents are to be defined as part of this scope. The approximate alternatives are shown in the below image, with the camp footprint to integrate with the airstrip relocation.

There are 3 potential spaces for the camp relocation with the favoured option being option 3. These options were determined based on the location being on a ridge and away from waterways or wetland areas to reduce malaria incidence. The final airstrip option is indicated in green.

Travel to the mine will be on a road towards the west which will connect to an access point at the eastern edge of the current mine. This access road and security location will also be included in the scope of works.

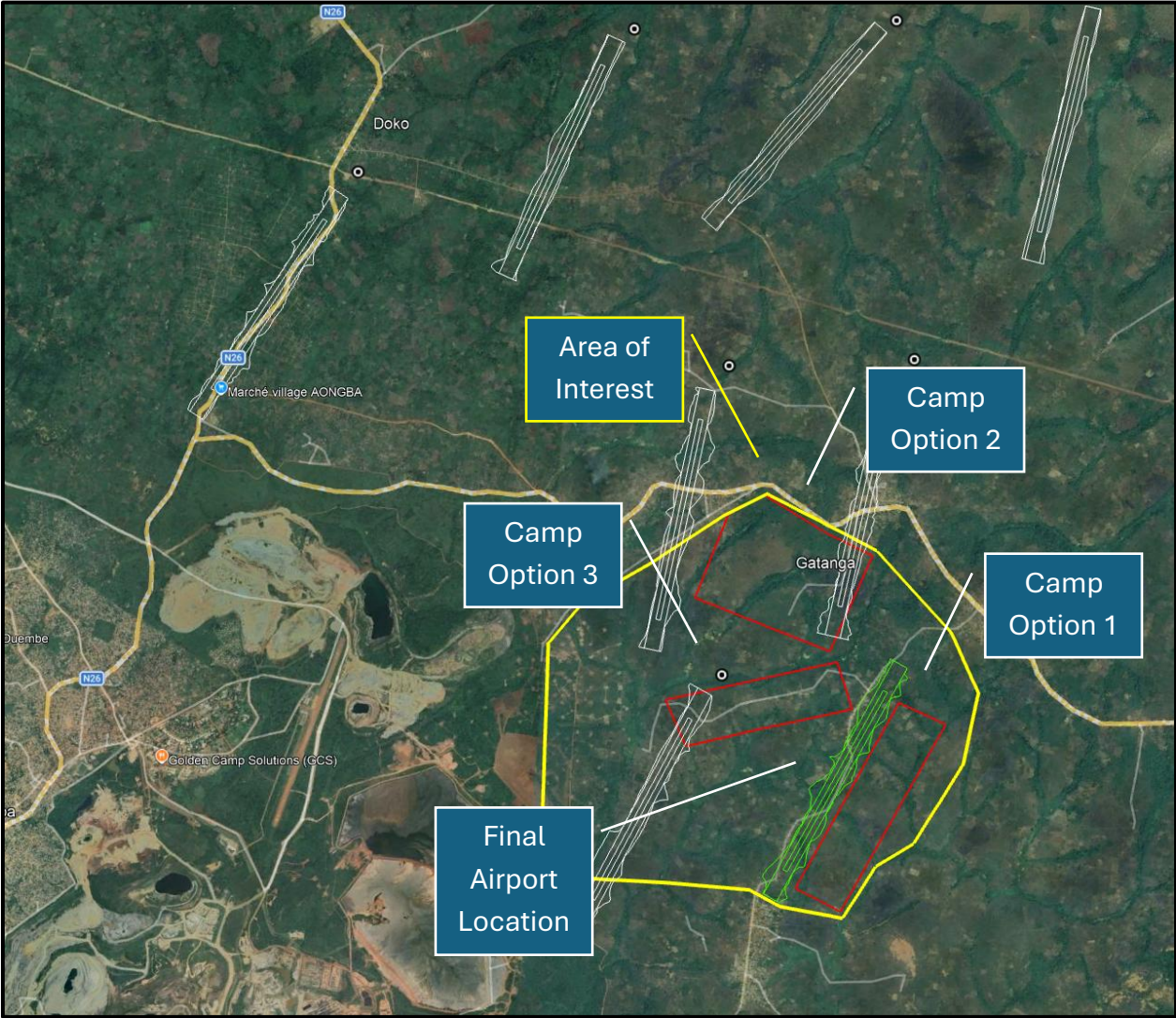


Figure 1: Map displaying the Kibali mine as well as the area of interest, camp option locations and airport option locations. Final airport location is indicated in green, and favoured camp location is indicated as option 3.

## **2. Objectives**

- Develop a functional and efficient camp master plan.
- Identify key infrastructure and utility requirements.
- Define zoning and spatial organization of camp facilities.
- Provide conceptual layouts and planning strategies that support safety, efficiency, and future scalability.
- Establish design assumptions and preliminary capacity estimates.

## **3. Scope of Services**

### **3.1 Data Collection and Review**

- Review available site information including location, topography, climate, and access conditions.
- Review any existing surveys, satellite imagery, or site documentation.
- Identify planning constraints and opportunities affecting camp development.

### **3.2 Design Criteria and Assumptions**

- Define design population and occupancy requirements.
- Establish planning standards for accommodation, services, and support facilities.
- Identify applicable regulatory or organizational guidelines.

### **3.3 Conceptual Master Planning**

- Develop a conceptual camp layout including zoning for:
  - Accommodation areas
  - Administration facilities
  - Dining and kitchen facilities
  - Laundry facilities
  - Recreation areas
  - Medical facilities
  - Storage and logistics areas
  - Waste management areas
  - Parking and transportation areas

- Develop internal circulation and access strategy.
- Identify emergency access routes and safety considerations.
- Define security requirements and

### **3.4 Infrastructure Concept Design**

Prepare conceptual strategies for:

- Power supply and distribution
- Water supply, treatment and storage
- Wastewater treatment and disposal
- Stormwater management
- Solid waste management
- Communications systems
- Fire protection strategy
- Access roads and internal camp roads

### **3.5 Accommodation Planning**

- Determine accommodation typologies (tents, modular units, container housing, etc.).
- Develop preliminary layouts, capacity and cost calculations.
- Identify supporting amenities including sanitation, laundry, and communal spaces.

### **3.6 Support Facilities Planning**

Conceptual planning for:

- Kitchens and dining halls
- Laundry facilities
- Medical clinics or first aid facilities
- Recreational areas
- Security checkpoints
- Maintenance and utility areas
- Shops for mine staff

### **3.7 Conceptual Drawings**

Preparation of the following drawings:

- Conceptual camp master plan
- Zoning diagram
- Circulation and access diagram
- Utility infrastructure concept diagrams

### **3.8 Preliminary Capacity and Area Estimates**

- Provide preliminary estimates of:
  - Camp capacity
  - Land use allocation
  - Building areas
  - Infrastructure footprints

### **3.9 Deliverables**

The consultant shall submit the following:

- Conceptual Design Report
- Conceptual Camp Master Plan
- Conceptual Infrastructure Strategy Diagrams
- Preliminary consumption rates of water and power
- Preliminary Area Schedule and Capacity Summary
- Design Assumptions and Criteria
- Capital cost estimate

### **4. Exclusions**

Unless otherwise specified, the following are excluded:

- Detailed engineering design
- Construction drawings
- Detailed cost estimates
- Environmental impact assessment
- Geotechnical investigations

- Detailed utility modeling

### **5. Schedule**

The conceptual design phase is expected to be completed within **12 weeks** from project commencement.

### **6. Coordination and Meetings**

The consultant shall participate in coordination meetings with the client and relevant stakeholders to review the conceptual design and incorporate feedback.

### **7. Approval Process**

The conceptual design shall be submitted for client review and approval prior to proceeding to the next phase of design.

**Interested companies are invited to submit their proposals to the following email address: [Kibali.ServiceContract@barrick.com](mailto:Kibali.ServiceContract@barrick.com)**